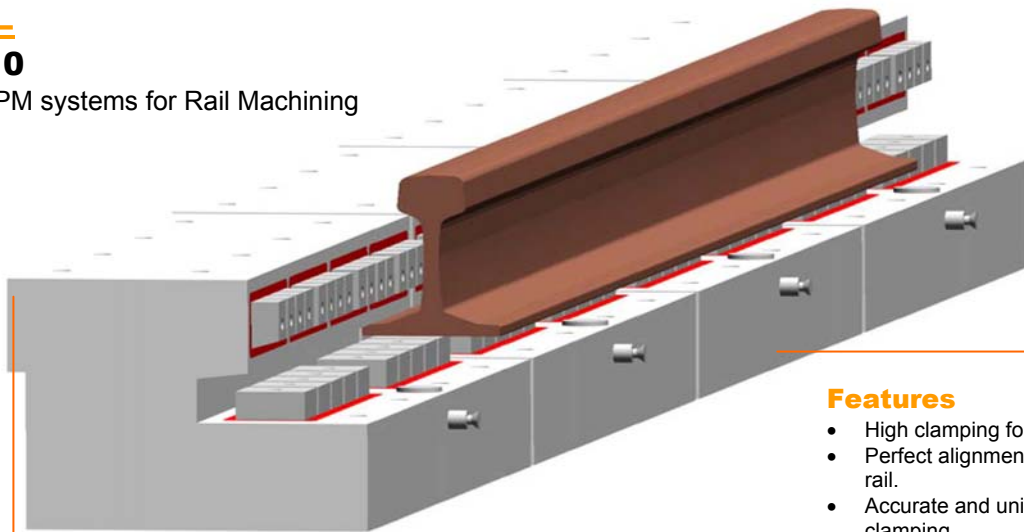




EPRAIL

ART 13110

Heavy duty EPM systems for Rail Machining

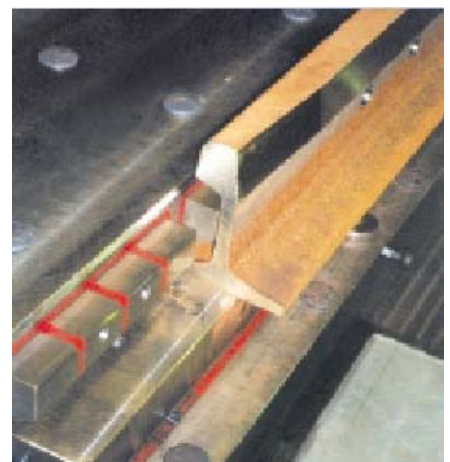
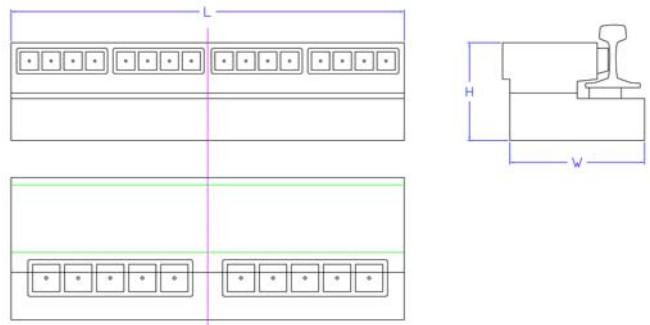


Applications

- A EPRAIL system is composed using a series of standard modular elements with 1000 mm fixed length each, in order to build up magnetic tables for different types of machines and length of rails to be machined.
- Each EPRAIL module has independent magnetic sectors right angle placed to clamp respectively the foot and the web of the rail, with a total clamping force of 12 MT/m.
- EPRAIL modules are standard equipped with a series of fixed pole extensions to match with the different rail profiles.

Features

- High clamping force.
- Perfect alignment of the rail.
- Accurate and uniform clamping.
- Complete machining in only 2 set-ups.
- Absence of machining vibrations.
- Low tools consumption.
- High stock removal.
- Superior accuracies and finishing.
- Ergonomic and practical use.
- Easy chips removal.
- Energy saving.



All dimensions are in mm

Art No.	W	L	H	Controller
13110.01	390	1080	268	93101.05

- Due to continuous upgradation in design there could be changes in specifications.
- Other sizes on request.