

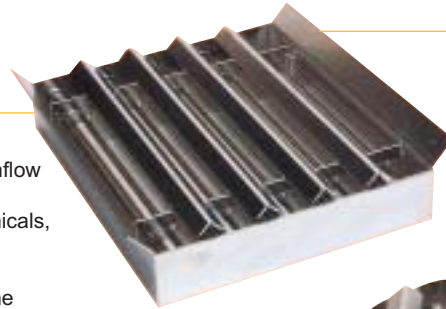


GRID MAGNET SEPARATOR

ART NO. 61202

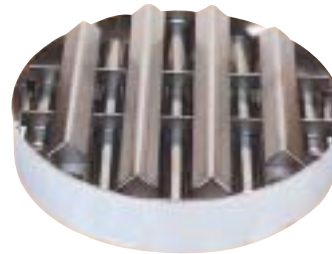
Applications

- Attracts tramp iron pieces from inflow of materials in hopper.
- Used particularly in plastic, chemicals, grains, cosmetics processing for powder separation.
- Concentrated magnetic field in the magnetic rod provides high grade attraction.



Features

- High power, low cost magnetic plates for inflow separation in hopper.
- Made with Strontium Ferrite magnets.
- Circular or rectangular shape with SS body.
- Single or double unit for better separation.
- High temperature grids made with AlNiCo Magnets.
- Magnet can be easily removed for cleaning.



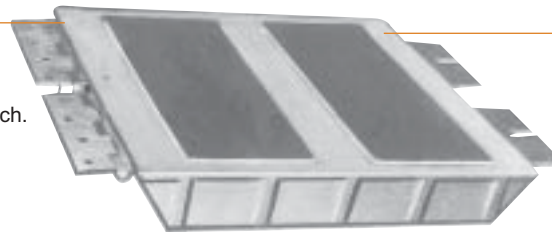
- Optional: with 100% stainless steel construction.
- Grid with Rare Earth NdFeB magnets can be made extra cost.

PLATE MAGNET SEPARATOR

ART NO. 61103

Features

- High power, low cost magnetic plates for inflow separation in chutes.
- Can be mounted under the flow by bolting.
- Can be hanged over the flow from top with hinge/latch.
- Magnet poles are saturated for maximum power.
- Made with Strontium Ferrite/ Rare Earth NdFeB magnets.
- Magnet can be easily removed for cleaning.



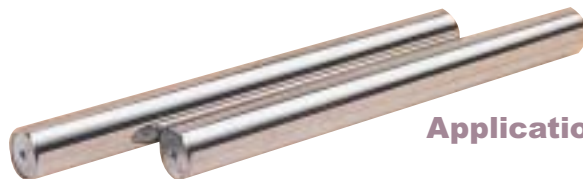
Applications

- Can attract tramp iron pieces by suspending over conveyor belt or under chute.
- Used particularly in flour, plastic, glass, chemicals, grains, cosmetics processing for powder separation.

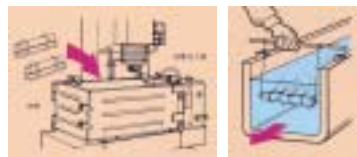
- Optional: with 100% stainless steel construction.

MAGNETIC RODS

ART NO. 61207

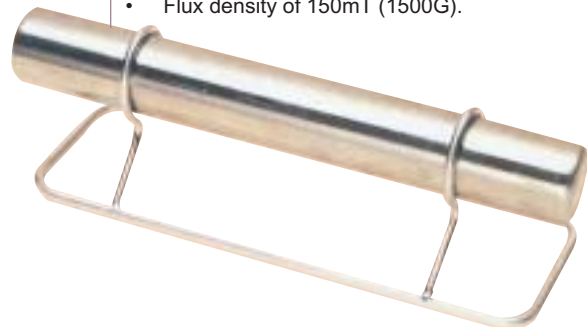


Applications



Features

- Powerful type made of rare earth NdFeB magnets.
- Stainless steel pipe housing for long life.
- Screws are attached at both ends (M5x6).
- Flux density of 150mT (1500G).



- Magnetic bar equipped with a stand is also available and the ordering code is 61208.

- Due to continuous upgradation in design there could be changes in specifications.
- Other sizes on request.