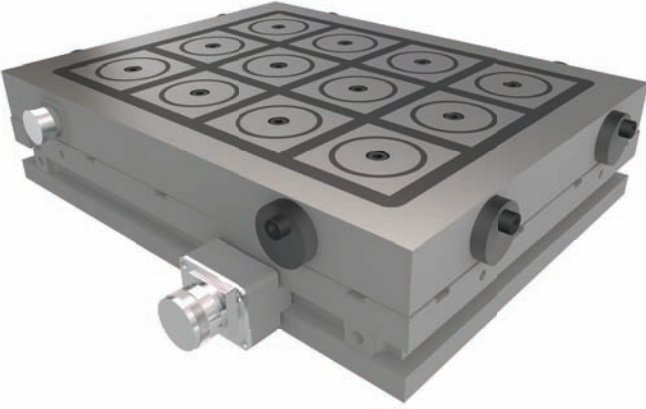


EMEPM

Features

- Electro Magnetic coils for varying magnetic flux height and demagnetization of jobs.
- High and uniform magnetic power, leading to uniform clamping of the job.
- Variable magnetic power.
- Modular, Rigid and Robust construction.
- Can be easily adapted to existing magnetic chucks of pole sizes 70x70 and above.
- 100% Leak Proof.

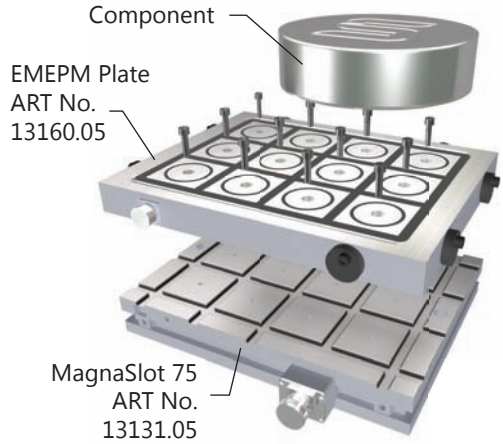
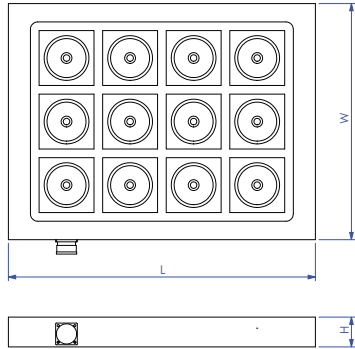


Application

- These EM plates can be used on top of magnetic chucks to reduce and increase magnetic flux height.
- Thinner jobs can be clamped.
- Flux height can be increased to clamp very uneven jobs specially casting.
- Easy release of hardened jobs can be done with these plates.
- Easily adaptable to existing chucks of any size.

ART No.	W	L	Poles	H	Controller	
13160.01	239	425	8	30	93120.01	
13160.02		601	12			
13160.03		815	16			
13160.04		1029	20			
13160.05	327	425	16			
13160.06		601	18			
13160.07		815	24			
13160.08		1029	30			
13160.09	415	425	16			
13160.10		601	24			
13160.11		815	32			
13160.12		941	36			
13160.13	503	1029	40			
13160.14		425	20			
13160.15		601	30			
13160.16		815	40			
13160.17		941	45			
13160.18		1029	50			
13160.19	591	601	36			93120.02
13160.20		815	48			93120.01
13160.21		941	54			93120.03
13160.22		1029	60			

- Due to continuous upgradation in design there could be change in specification.
- Others sizes on request.
- All dimensions are in mm.



- The Magnet can be designed for 220/380/400/480 VAC, 50/60 Hz.
- Custom designed solutions also available.