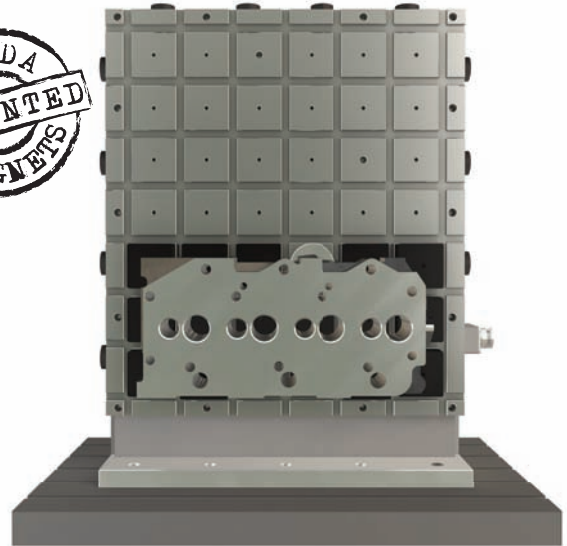


# EPCUBE

## 50/ 75mm square pole Tombstone

### Features

- Patented full steel Top surface.
- High induction of magnetic flux.
- High & uniform clamping power throughout the bed.
- Variable magnetic power possible.
- Perfect safety in case of power failure.
- 2 or 4 or multiple magnetic face.
- Unobstructed movement of tools during machining as all five faces of the job can be machined in the same setting.
- Drastically reduces the setup time and machining of the work pieces.
- Total magnetic surface used for clamping giving better machining accuracy as reducing chattering.
- 100% Leak Proof.
- Clamping force for EPCUBE 50  $\geq$  350 kg/ pole.
- Clamping force for EPCUBE 75  $\geq$  790 kg/ pole.



### Application

- Most suitable for milling operations on horizontal machining center.
- A minimum of 4/8 alternate poles contact is necessary for optimum clamping.
- Minimum thickness of job : 10-15 mm.
- Easily integrated with Pallet changing and FMS Systems.
- AUTOMATIC SHIMMING: Mobile pole extensions allow clamping and uniformly support work pieces even with uneven surfaces, achieving high accuracies of planarity.

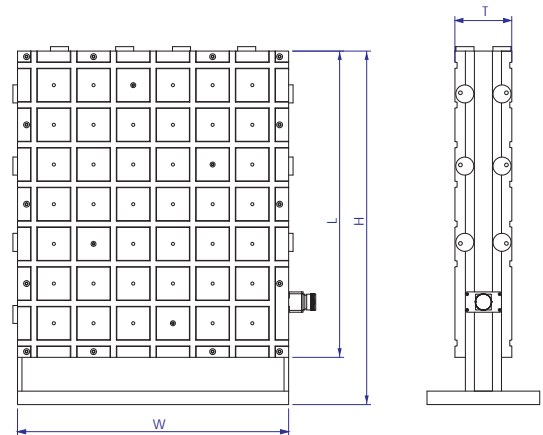
### EPCUBE 75

ART No.	W	L	H	T	Poles On Each Face	Controller
13107.01	327	337	442	125	9	93101.09
13107.02	415	425	530		16	
13107.03		601	706		24	
13107.04	591	815	920		48	93101.10
13107.05	601	679	784		42	93101.09
13107.06	767	590	695		64	93101.10
13107.07		1029	1134		80	

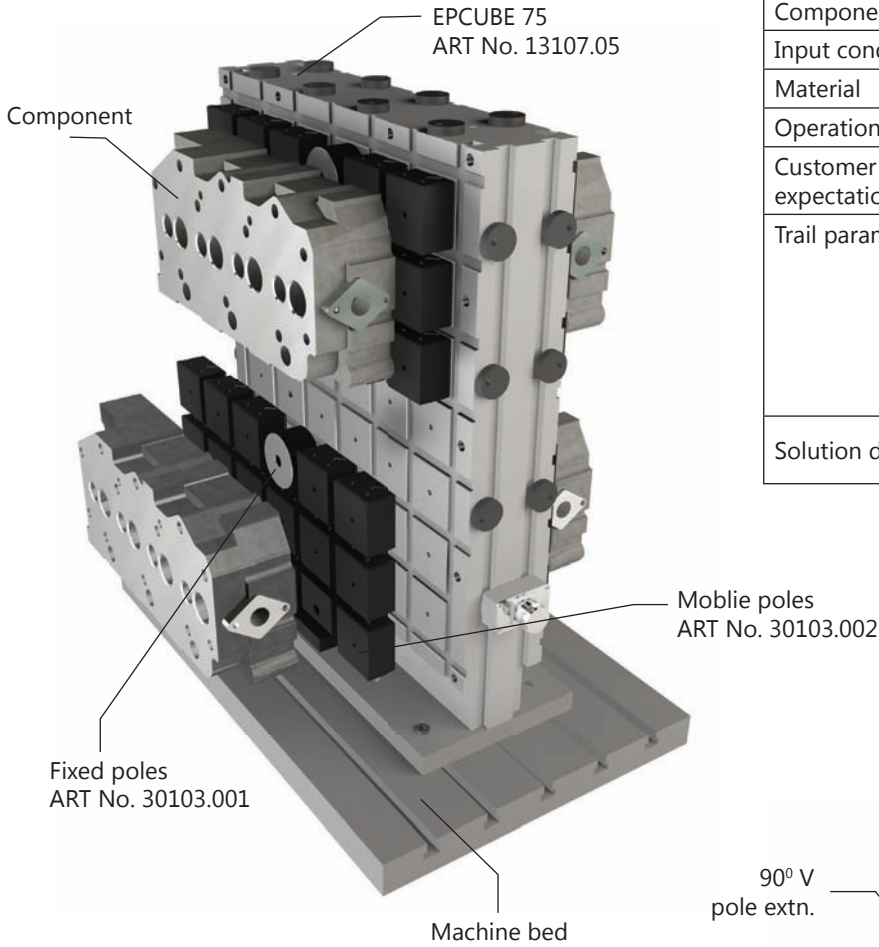
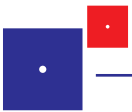
### EPCUBE 50

ART No.	W	L	H	T	Poles On Each Face	Controller
13116.01	300	430	535	125	24	93101.09
13116.04	420	590	695		48	
13116.06	480	590	695		56	
13116.07	590	480	585		56	
13116.08		600	705		72	
13116.10	600	750	855		90	93101.10
13116.11		990	1095	126		

- Due to continuous upgradation in design there could be change in specification.
- Others sizes on request.
- All dimensions are in mm.



- The Magnet can be designed for 220/380/400/480 VAC, 50/60 Hz.
- Custom designed solutions also available.



Component	4 Cylinder engine block
Input condition	Pre-machined
Material	Cast iron
Operations	Drilling and face milling
Customer expectation	Flatness of the face to improve
Trail parameter	<ul style="list-style-type: none"> <li>• Dia 200 face-mill cutter</li> <li>• No. of cutting edged: 12</li> <li>• Depth of cut: 4mm</li> <li>• Width of cut: 160mm</li> <li>• Feed: 800mm/min</li> <li>• Rate of material removal: 305 cm<sup>3</sup>/min</li> </ul>
Solution details	EPCUBE 75 with mobile and fixed poles were used to achieve the flatness of the job.

Component	Round Shaft
Input Condition	Turned
Material	Mild Steel
Operations	Through Slot
Customer Expectation	Cycle time
Trail Parameter	<ul style="list-style-type: none"> <li>• Dia 16 face-mill cutter</li> <li>• No. of Cutting edged: 4</li> <li>• Depth of cut: 16mm</li> <li>• Width of cut: 16mm</li> <li>• Feed: 400mm/min</li> <li>• Rate of material removal: 100 cm<sup>3</sup>/min</li> </ul>
Fixture Details	EPCUBE 50 with V pole extensions was used

