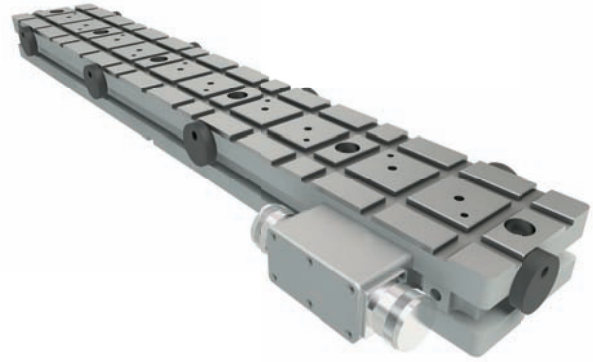


UNIROW

Single Row EPM chuck with Square poles sizes 50 & 75 mm

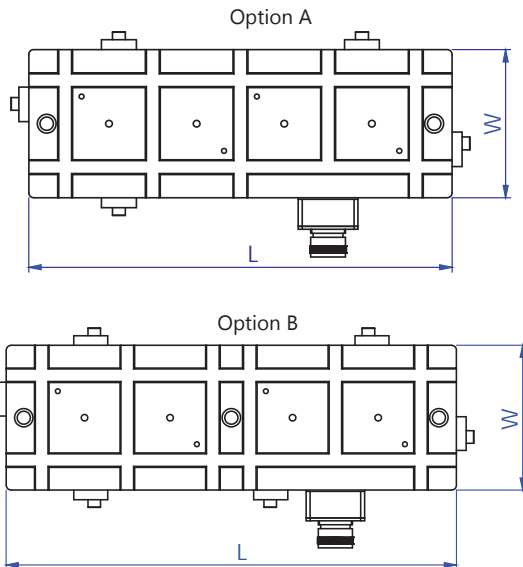
Features

- Patented designed product.
- Single Row of poles of size 50x50 mm or 75x75 mm.
- Modular in design each with 2 connectors.
- Available in 12 standard configurations. Other sizes can be designed as per application demand.
- Magnets can be Daisy Chain connected so that only one cable needs to be connected to the controller and the magnets are connected amongst themselves.
- Height of all magnets is 60 mm.
- Clamping force for UNIROW 50 \geq 350 kg/ pole.
- Clamping force for UNIROW 75 \geq 790 kg/ pole.



Applications

- For machining applications of job of all sizes and shapes.
- Most suitable for jobs with a number of holes and very less clamping area.
- Pole extensions raise the work piece above the chuck to provide clearance for the tools.
- Dowel holes can be made on working surface for location of work piece.



- The Magnet can be designed for 220/380/400/480 VAC, 50/60 Hz.
- Custom designed solutions also available.

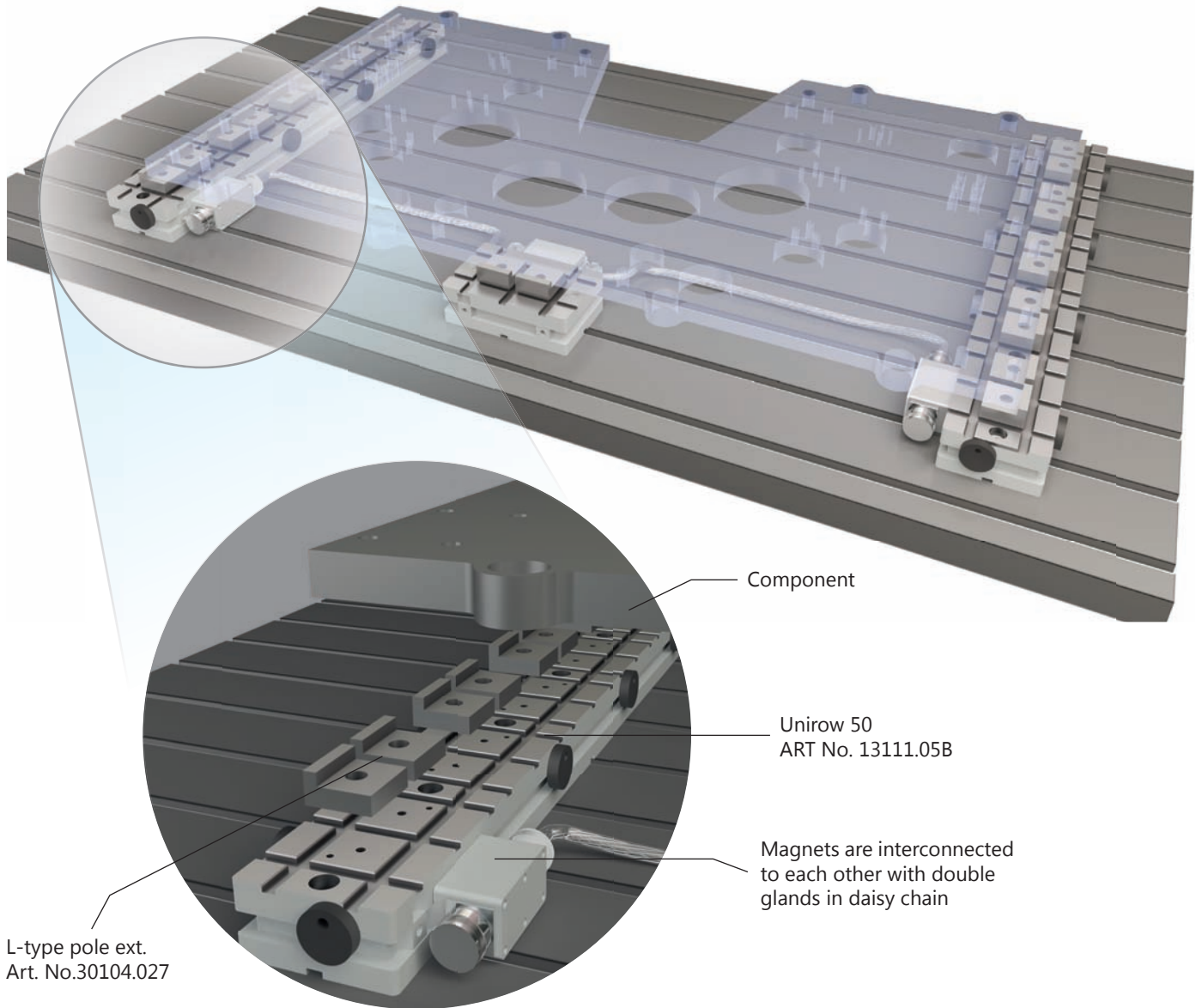
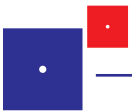
UNIROW 50

| ART No. | W | L | Poles |
|-----------|-----|-----|-------|
| 13111.01A | 120 | 190 | 2 |
| 13111.02A | 120 | 310 | 4 |
| 13111.02B | 120 | 345 | 4 |
| 13111.03A | 120 | 465 | 6 |
| 13111.03B | 120 | 500 | 6 |
| 13111.04A | 120 | 585 | 8 |
| 13111.04B | 120 | 655 | 8 |
| 13111.05A | 120 | 705 | 10 |
| 13111.05B | 120 | 810 | 10 |

UNIROW 75

| ART No. | W | L | Poles |
|-----------|-----|------|-------|
| 13168.01A | 150 | 287 | 2 |
| 13168.02A | 150 | 425 | 4 |
| 13168.02B | 150 | 463 | 4 |
| 13168.03A | 150 | 639 | 6 |
| 13168.03B | 150 | 677 | 6 |
| 13168.04A | 150 | 815 | 8 |
| 13168.04B | 150 | 891 | 8 |
| 13168.05A | 150 | 991 | 10 |
| 13168.05B | 150 | 1105 | 10 |

- Due to continuous upgradation in design there could be change in specification.
- Others sizes on request.
- All dimensions are in mm.



Wall plate of a printing press. The job has a lot of holes making it very difficult for magnets to be put in the bottom of the job. The magnets are put on the side with L-type and the job is clamped. The magnets were interconnected to each other in daisy chain so that only one cable is connected to the controller.

Solution details:

| SI No. | ART No. | Description | Qty |
|--------|-----------|--|-----|
| 1 | 13111.05 | UNIROW 50, with 10 poles | 2 |
| 2 | 13111.01 | UNIROW 50, with 2 poles | 1 |
| 3 | 30104.027 | 2 pole L-type pole extension | 11 |
| 4 | 93102.01 | Controller to operate all magnets together | 1 |